



LIFE *ELIA*-RTE project

Creating green corridors under overheads lines



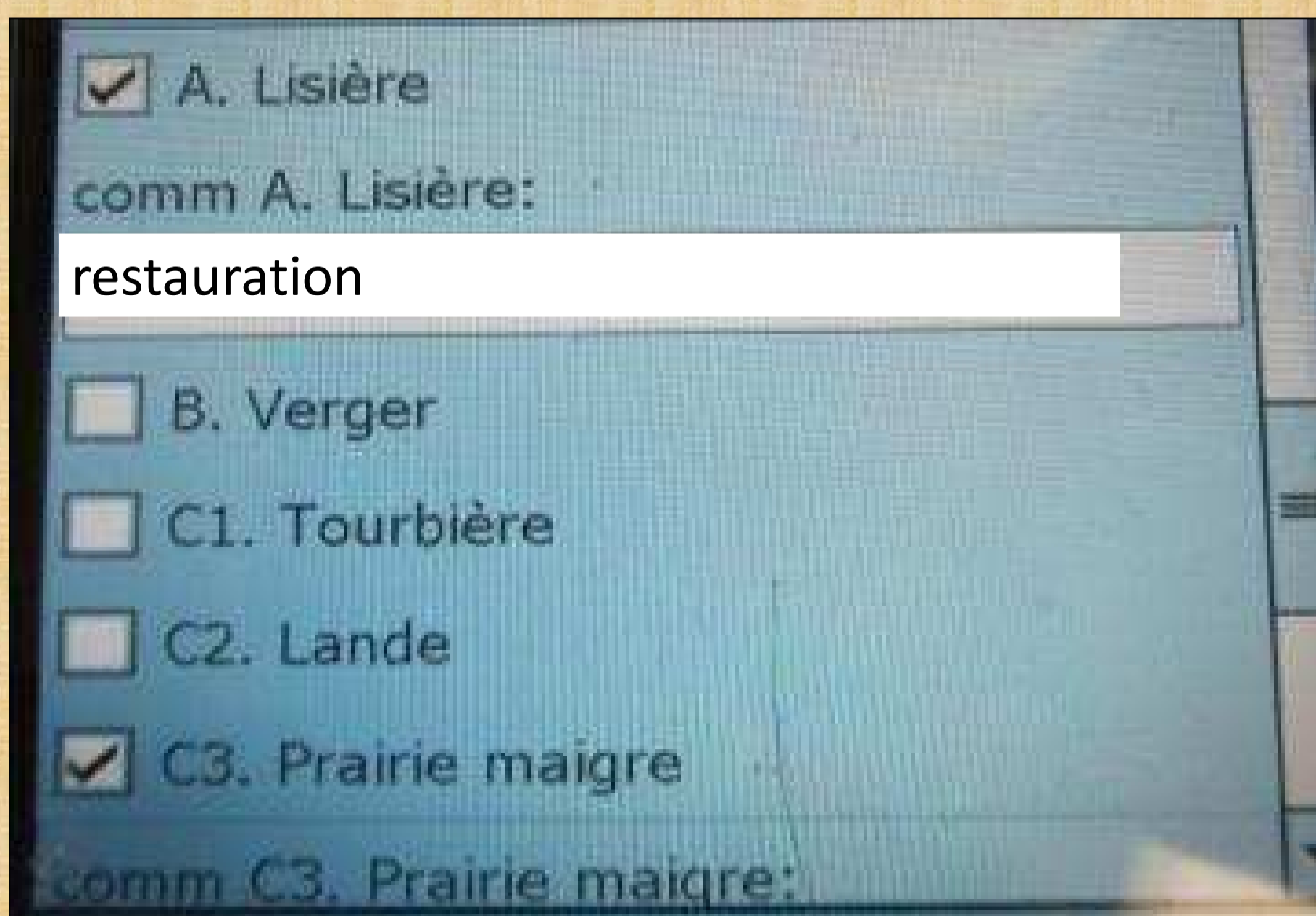
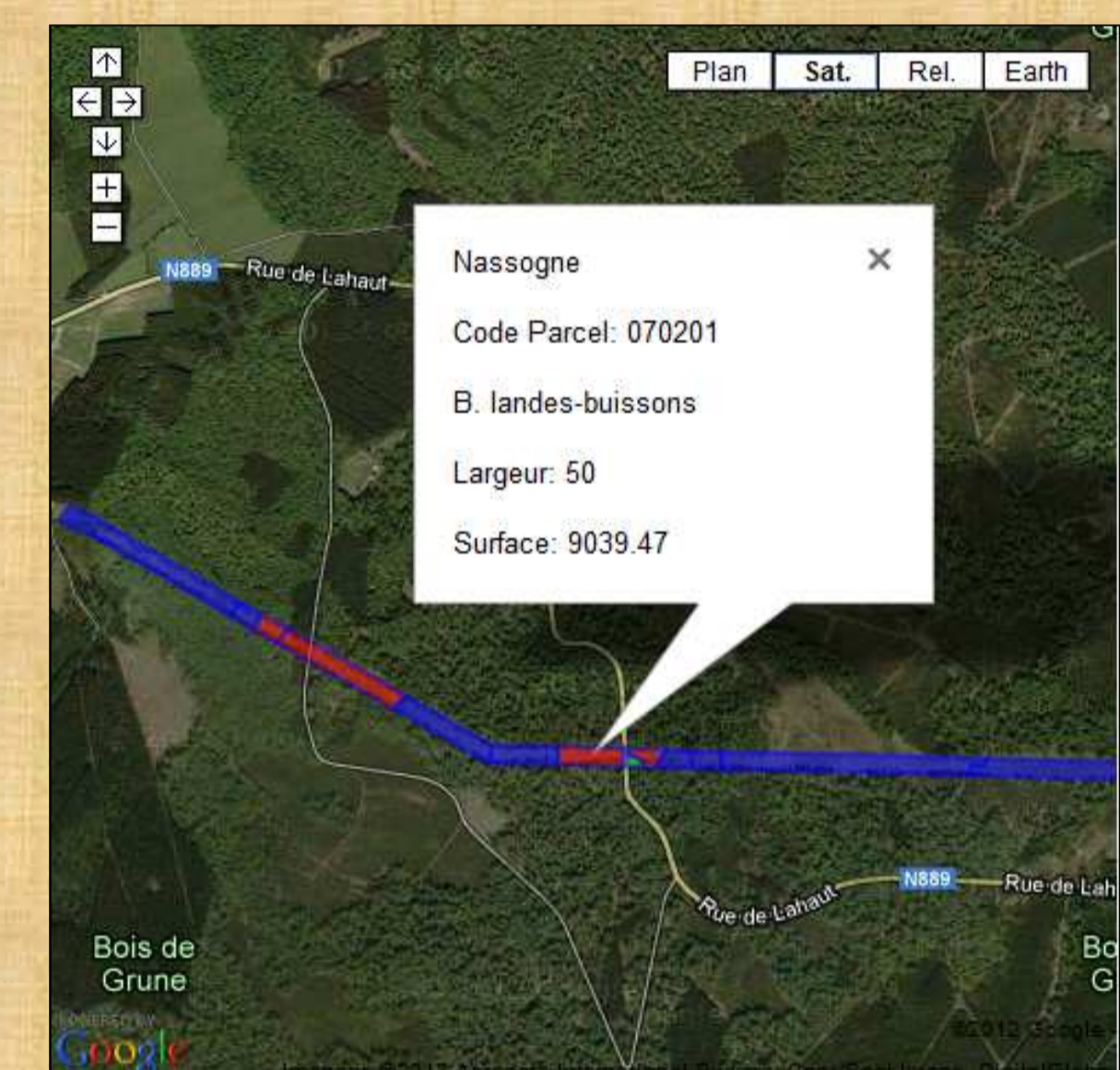
Habitat mapping of high-voltage lines and choice of management actions or restoration to undertake

Objectives: After an initial mapping of ecological habitats present below high-voltage lines, actions of management or restoration to undertake will be determined.

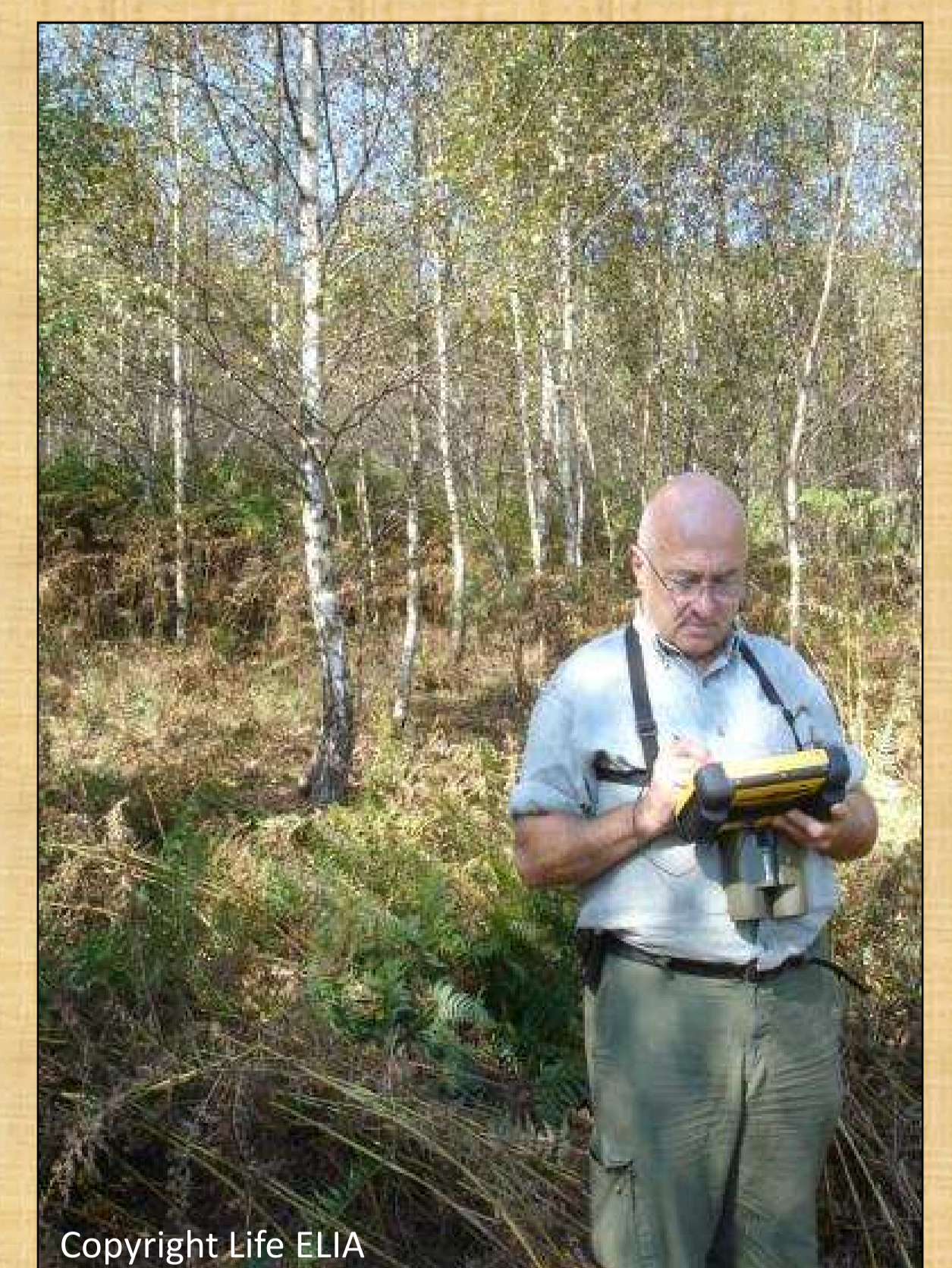
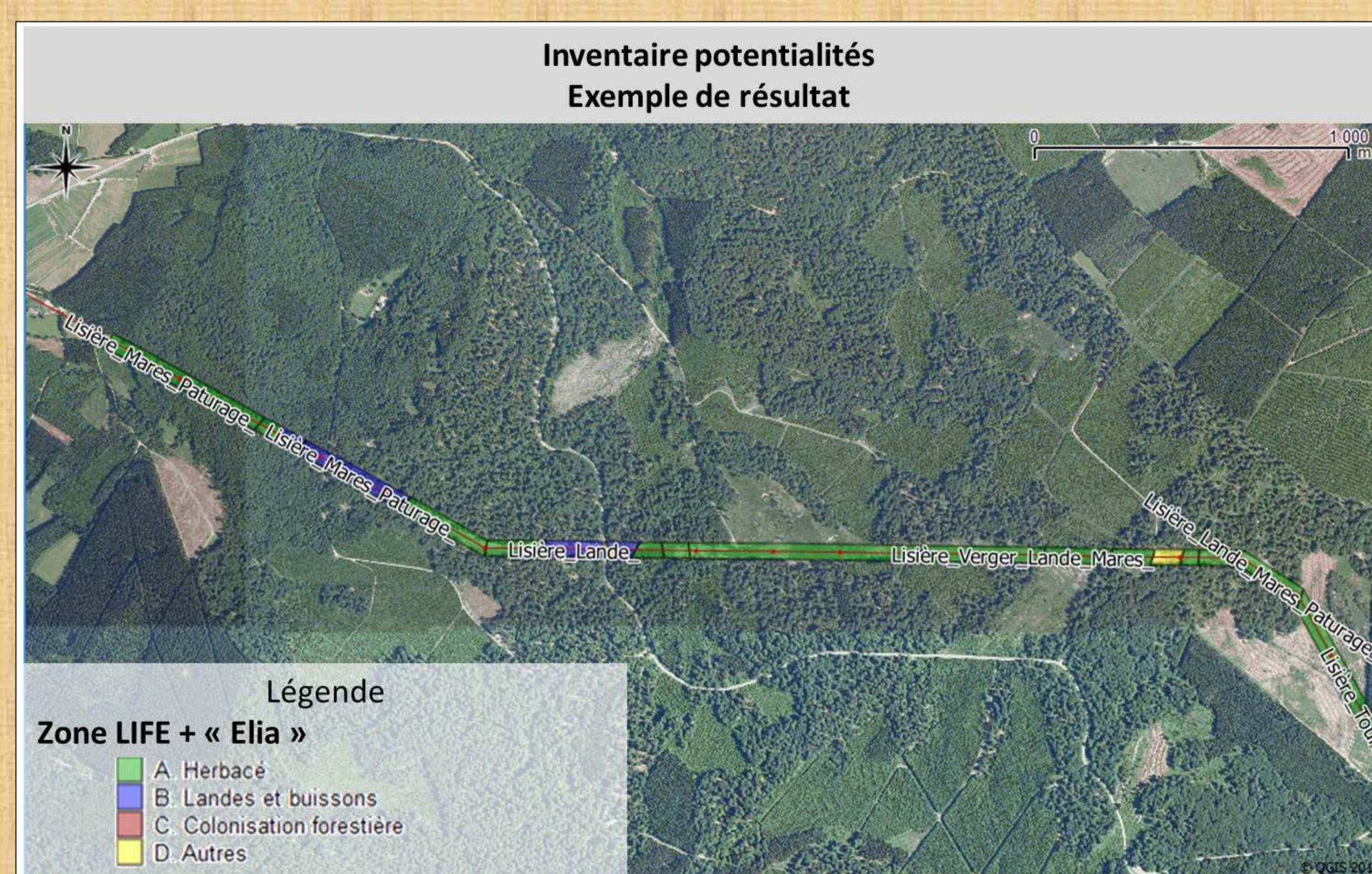
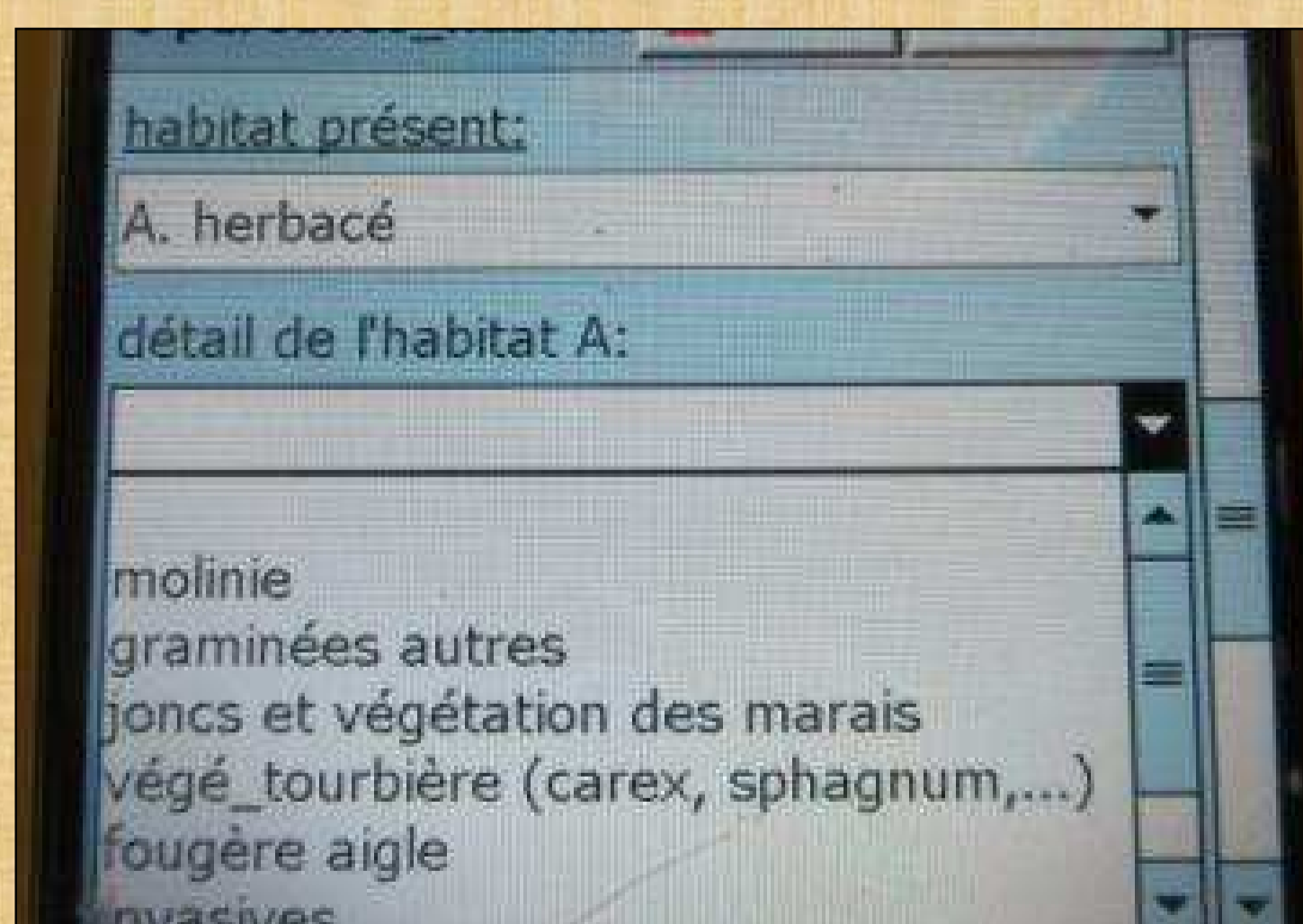
Method: identify ecological habitats present below high-voltage lines and use a GPS to delimit them.

For each habitat defined:

- characterization of the implementation level for the security of the line depending on the type and height of the adjacent forest stands and the height of the vegetation under the line
- determining management actions and restorations which could potentially be implemented in the security corridors



- the choice of management/restoration actions has been refined through a second mapping passage in the field. Alternative actions have been revised based on various factors (rationalization of resources to implement the projects, accessibility, objectives, ...).
- finally, the proposed actions to be implemented will be suggested to owners and managers of the various parcels concerned.



The LIFE ELIA project is co-financed by the European Commission

